







387



98777-77860

**LEGEND :**

- 1: ENTRY / EXIT
- 2: DROP OFF
- 3: PARKING
- 4: BASKETBALL COURT
- 5: BADMINTON COURT
- 6: WATER FEATURE
- 7: LANDSCAPE LAWN
- 8: MEDITATION LAWN
- 9: SENIOR CITIZEN LAWN
- 10: JOGGING TRACK

THE RESORT PHASE (PART-A)  
 THE RESORT PHASE (PART-B)

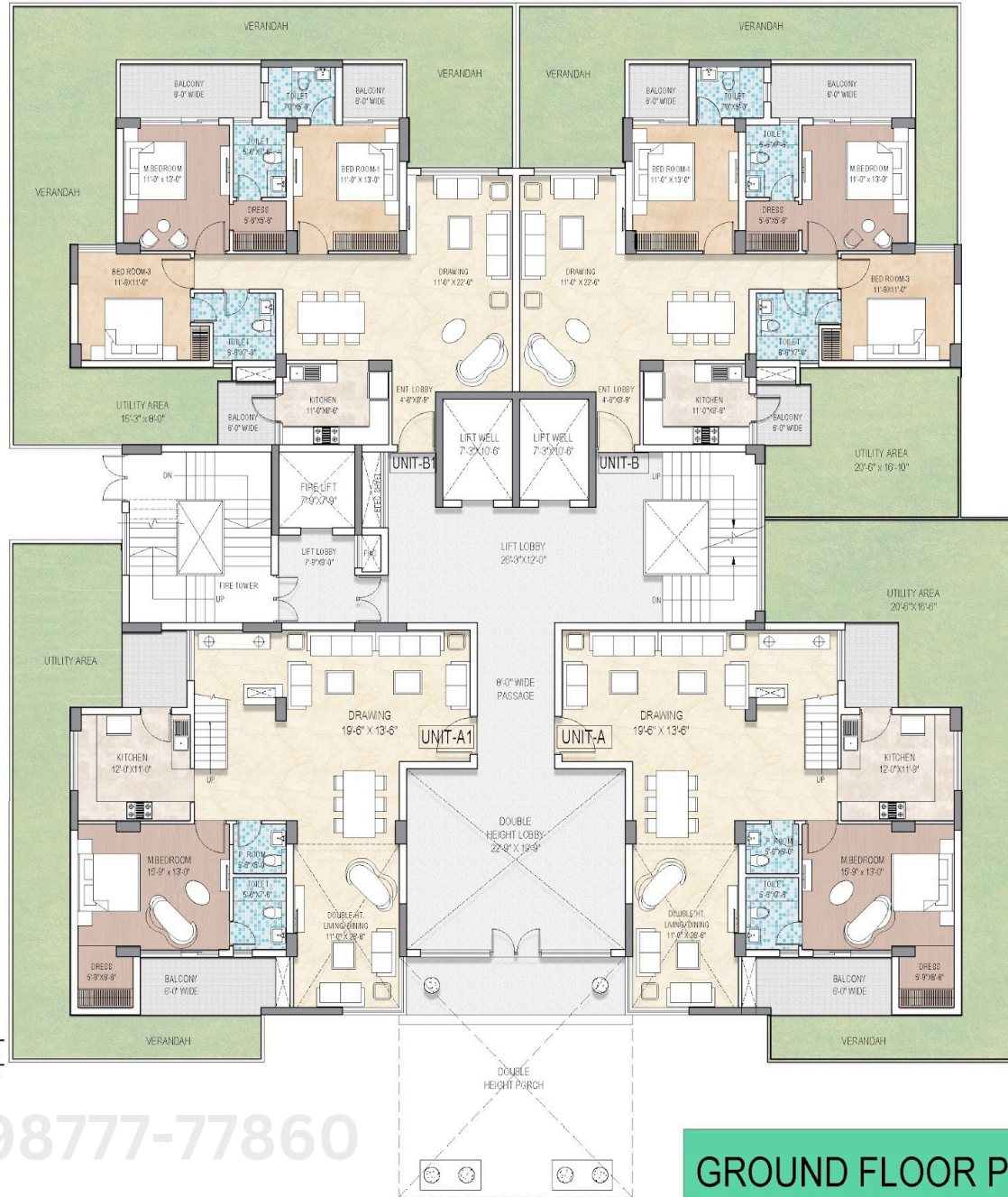


**LAYOUT PLAN**

The phase is a standalone project and is part of larger project and many of the services, amenities, facilities and infrastructure within this phase/project will be integrated, commonly connected and utilized with other such services, amenities, facilities and infrastructure in other phases/projects without any reference to the phase as well as a standalone project. The rights and interests of the developer/owner are without any individual ownership, rights of any common services or infrastructure and are confined to the phase and the town in which the units are situated and that the addresses have no right or interest in any other phases or projects developed by the company.

**TYPE- B 1**  
 CARPET AREA = 1183.0 SQFT  
 SUPER AREA = 1876.0 SQFT

**TYPE- B**  
 CARPET AREA = 1183.0 SQFT  
 SUPER AREA = 1876.0 SQFT



**TYPE-A1**  
 CARPET AREA = 2267.0 SQFT  
 SUPER AREA = 3859.0 SQFT

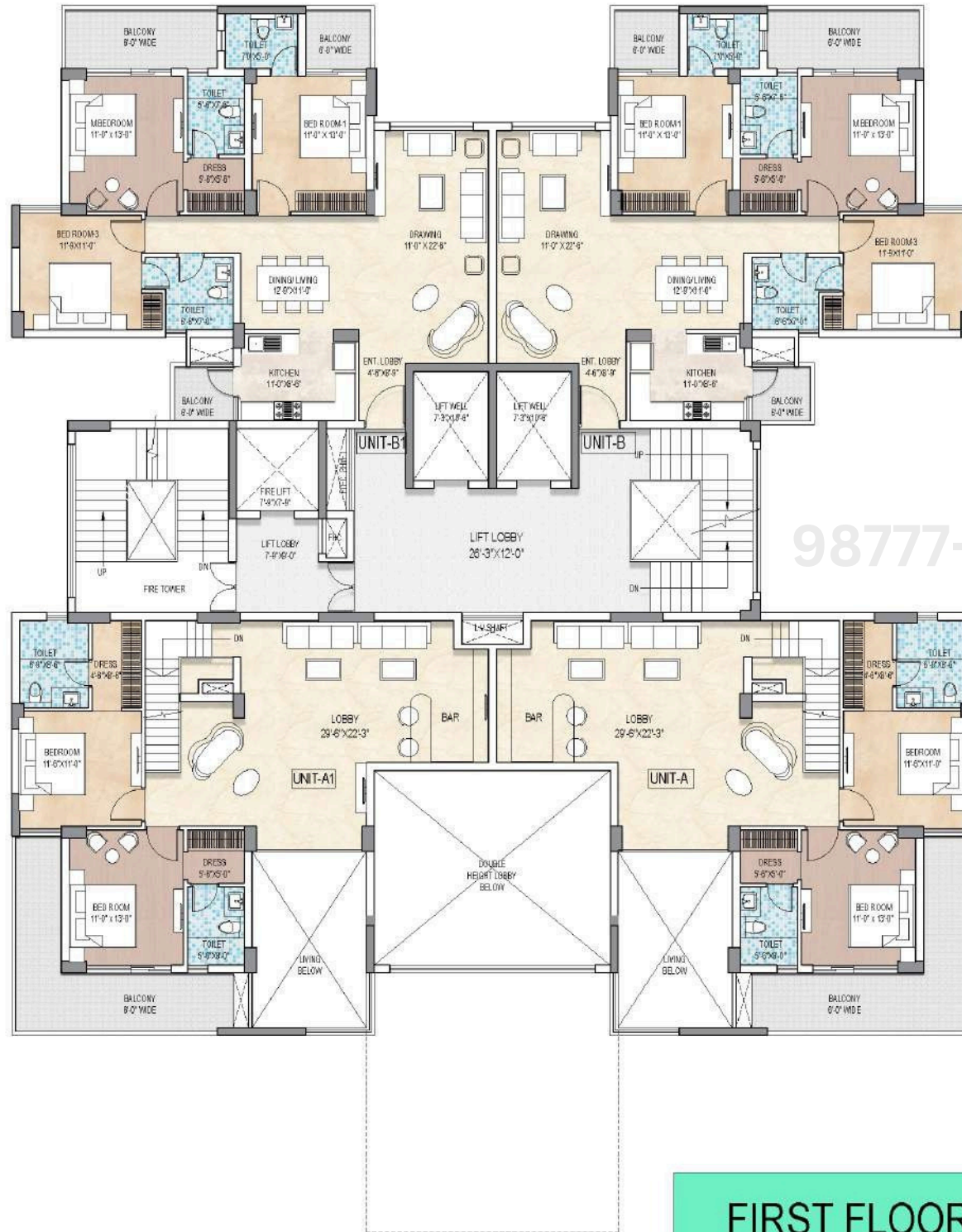
**TYPE-A**  
 CARPET AREA = 2267.0 SQFT  
 SUPER AREA = 3859.0 SQFT

98777-77860

**GROUND FLOOR PLAN : TOWER T5**  
 CARPET AREA

**TYPE- B 1**  
 CARPET AREA = 1183.0 SQFT  
 SUPER AREA = 1876.0 SQFT

**TYPE- B**  
 CARPET AREA = 1183.0 SQFT  
 SUPER AREA = 1876.0 SQFT



98777-77860

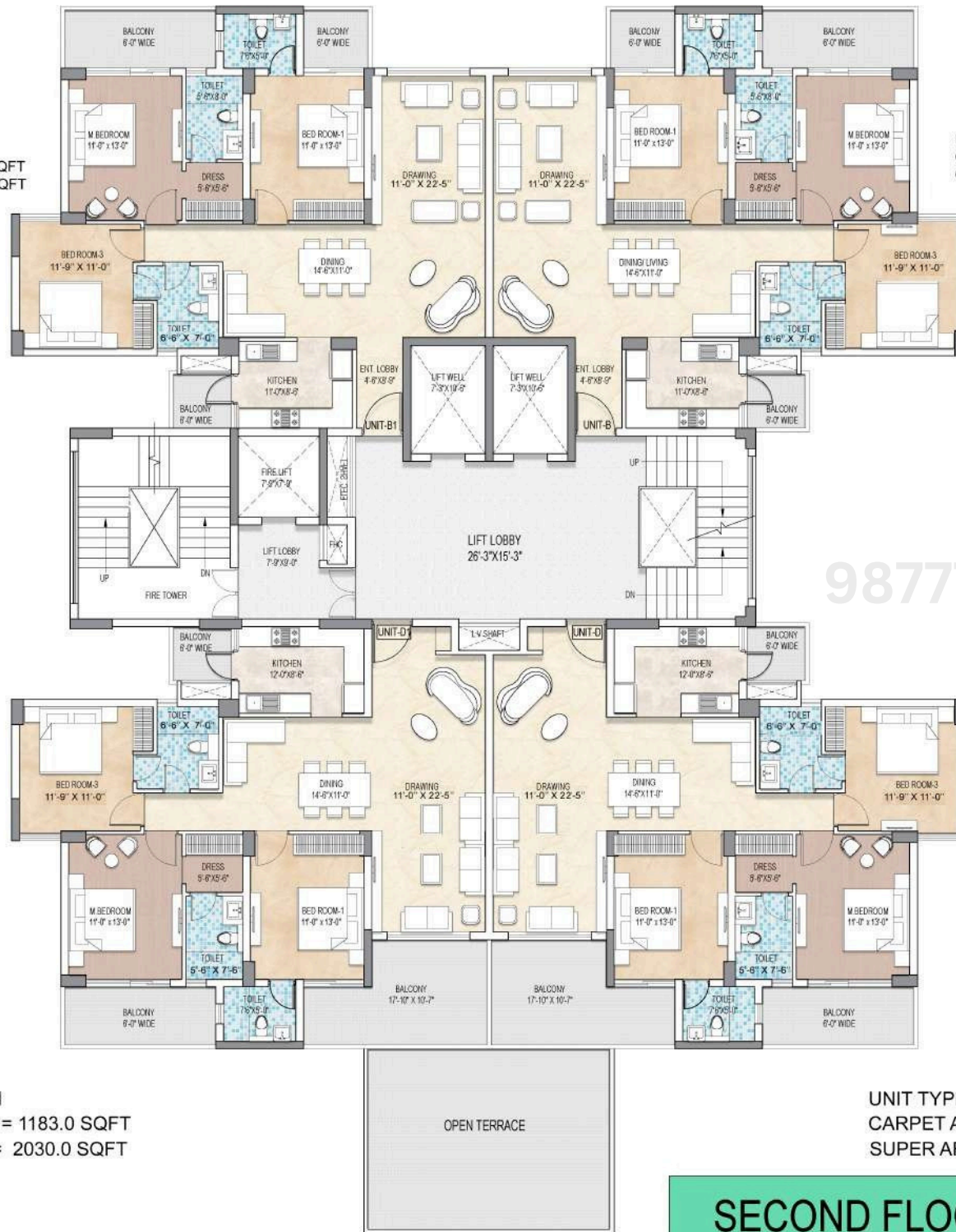
**TYPE-A1**  
 CARPET AREA = 2267.0 SQFT  
 SUPER AREA = 3859.0 SQFT

**TYPE-A**  
 CARPET AREA = 2267.0 SQFT  
 SUPER AREA = 3859.0 SQFT

**FIRST FLOOR PLAN : TOWER T5**

UNIT TYPE -B1  
 CARPET AREA = 1183.0 SQFT  
 CARPET AREA = 1876.0 SQFT

UNIT TYPE -B  
 CARPET AREA = 1183.0 SQFT  
 CARPET AREA = 1876.0 SQFT



98777-77860

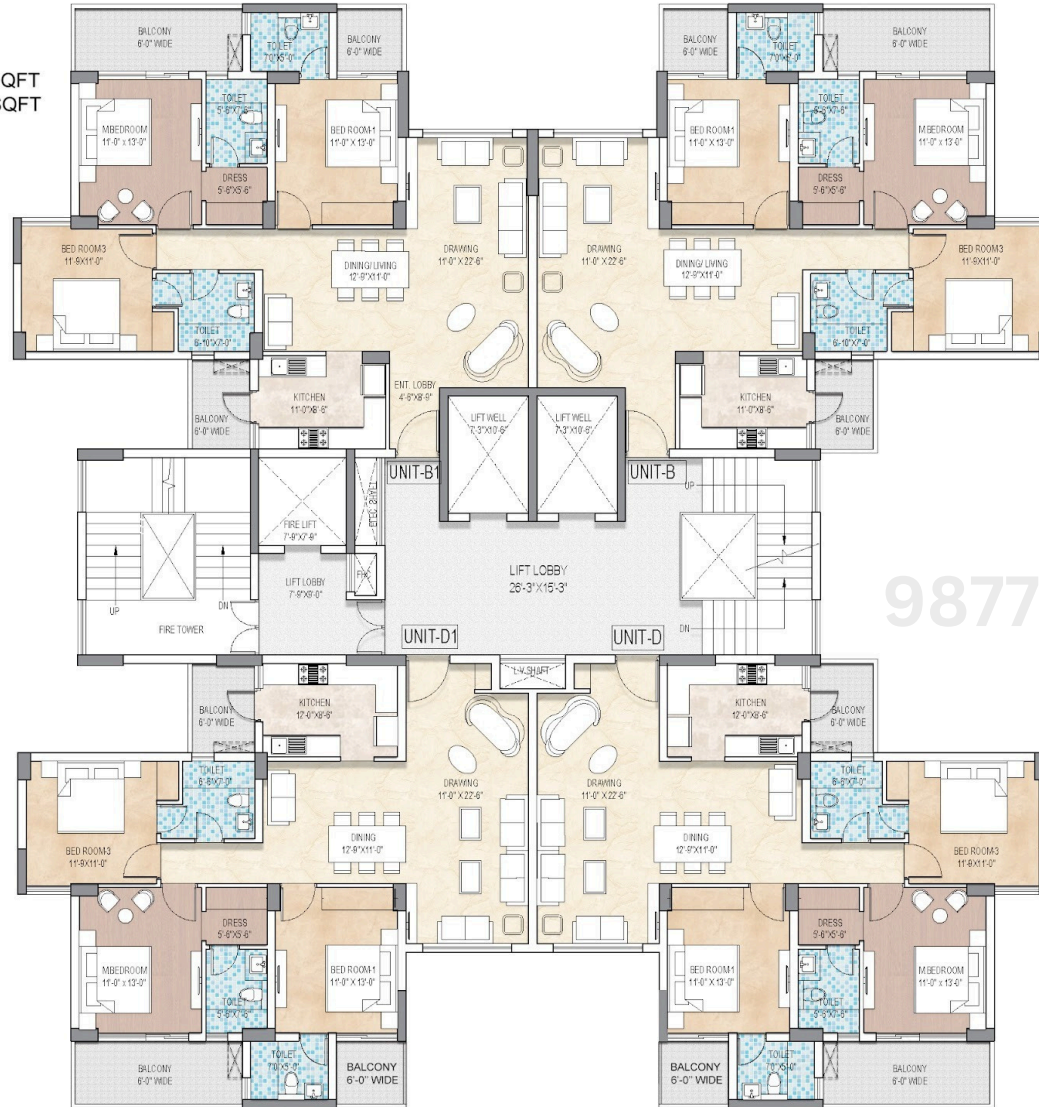
UNIT TYPE - D1  
 CARPET AREA = 1183.0 SQFT  
 SUPER AREA = 2030.0 SQFT

UNIT TYPE - D  
 CARPET AREA = 1183.0 SQFT  
 SUPER AREA = 2030.0 SQFT

**SECOND FLOOR PLAN : TOWER T5**

UNIT TYPE -B1  
CARPET AREA = 1183.0 SQFT  
CARPET AREA = 1876.0 SQFT

UNIT TYPE -B  
CARPET AREA = 1183.0 SQFT  
CARPET AREA = 1876.0 SQFT



98777-77860

UNIT TYPE -D1  
CARPET AREA = 1183.0 SQFT  
CARPET AREA = 1876.0 SQFT

UNIT TYPE -D  
CARPET AREA = 1183.0 SQFT  
CARPET AREA = 1876.0 SQFT

TYPICAL FLOOR PLAN 3RD TO 18TH : TOWER T5

**UNIT -E1**  
 CARPET AREA = 2815.0 SQFT  
 SUPER AREA = 5039.0 SQFT

**UNIT -E**  
 CARPET AREA = 2815.0 SQFT  
 SUPER AREA = 5039.0 SQFT



98777-77860

**UNIT -F**  
 CARPET AREA = 2542.0 SQFT  
 SUPER AREA = 4180.0 SQFT

**LOWER PENT HOUSE FLOOR PLAN : TOWER T5**

**UNIT -E1**  
CARPET AREA = 2815.0 SQFT  
SUPER AREA = 5039.0 SQFT

**UNIT -E**  
CARPET AREA = 2815.0 SQFT  
SUPER AREA = 5039.0 SQFT



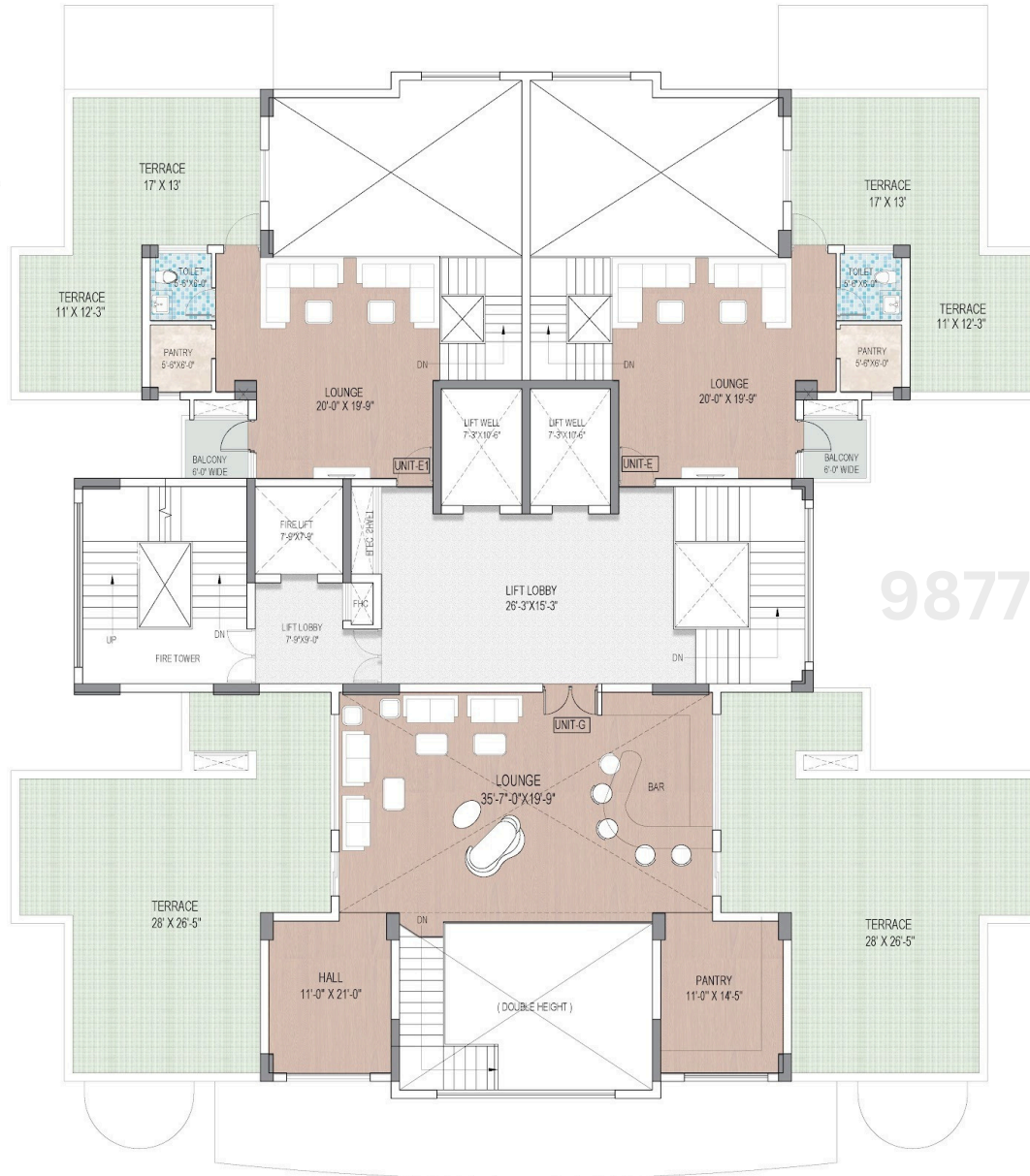
98777-77860

**UNIT - G**  
CARPET AREA = 3514.0 SQFT  
SUPER AREA = 6559.0 SQFT

# UPPER PENT HOUSE FLOOR PLAN : TOWER T5

**UNIT -E1**  
CARPET AREA = 2815.0 SQFT  
SUPER AREA = 5039.0 SQFT

**UNIT -E**  
CARPET AREA = 2815.0 SQFT  
SUPER AREA = 5039.0 SQFT



98777-77860

**UNIT - G**  
CARPET AREA = 3514.0 SQFT  
SUPER AREA = 6559.0 SQFT

## UPPER PENT HOUSE UPPER FLOOR PLAN : TOWER T5

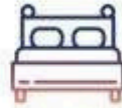
# Specifications

Structure Earthquake resistant RCC frame structure with Mivan Shuttering  
 External furnish Textured paint of exterior grade



## Living/Dining/Family Room

Flooring Premium vitrified tiles  
 Walls Plastic emulsion paint  
 Ceiling Plastic emulsion paint  
 AC Split AC



## Bed Rooms

Flooring Vitrified tiles  
 Wall Finishes Plastic emulsion paint  
 Ceiling Plastic emulsion paint  
 Wardrobe Laminated wooden cupboard  
 AC Split AC



## Toilets

Flooring Anti skid tiles/ ceramic tiles  
 Dado Premium Tiles - Complete Wall  
 Wall Finishes Plastic emulsion paint  
 Ceiling Plastic emulsion paint  
 Fittings European WC, Wash Basin, Mirror, Shower  
 Provision for Geyser Fitting



## Kitchen

Modular Kit. Premium design Modular kitchen cabinets  
 Flooring Anti-Skid Tiles/Ceramic Tiles  
 Dado Tiles Upto 2ft above the counter  
 Wall Finishes Plastic Emulsion Paint  
 Ceiling Plastic Emulsion Paint  
 Counter Pre polish premium granite  
 Add on RO, Chimney, Hob, Geyser



## Balcony

Flooring Anti-Skid Tiles/ Ceramic Tiles  
 Wall Finishes Water Proof exterior grade paint  
 Ceiling Water Proof exterior grade paint  
 Handrail MS Railing



## Staircase

Riser & Treads Polished Granite  
 Wall Finishes Plastic Emulsion Paint  
 Ceiling Plastic Emulsion Paint  
 Handrail MS Railing



## Door & Window

Doors Flush Door  
 Windows/Ventilators UPVC Section



## Lifts

Two passenger lifts of premium brand and one fire service lift to be provided



## Electrical Fitting

PVC concealed conduit copper wiring.  
 Modular Switches/ Sockets  
 Telephone outlet in living room  
 Electrical point for split AC in bedrooms  
 TV outlets in Living room & all bedrooms  
 Fans, Lights



## Power Back Up

Min. 2KVA & Max. 5KVA for each apartment (to be charged extra)  
 100% power backup for lift & common areas

## Entrance Lobby

Double height entrance lobby with premium Pattern flooring & sit outs.

## Car Parking

Provision for Covered Car Parking in the basement. (to be charged extra)

## Plumbing

All internal plumbing in GS/PVC/Composite. Underground Water Tanks with pump house and tube wells uninterrupted Water Supply

## Security and Fire Protection

Video Surveillance system, Perimeter security and Entrance Lobby security with CCTV cameras plus other appropriate hi-tech Security, Fire Prevention Suppression, Detection & Alarm System as per fire norms.

98777-77860

# Price On Call

**98777-77860**